

OpenText™ Freeway Cloud

The quick and easy route to EDI connectivity for SMBs



Speeds setup and is **simple to use**



Reduces error-prone manual processes



Improves transaction visibility



Accommodates growth and **future-proofs** your company

The road to growth for small and medium-sized businesses (SMBs) can be difficult. When attracting customers and staying ahead of the competition, it is difficult to accommodate an increasing number of orders and the mandates of large B2B trading partners. OpenText Freeway Cloud can quickly and easily move a business toward EDI connectivity with its B2B trading partners.

Electronic Data Interchange (EDI) is the computer-to-computer exchange of business documents in a standard electronic format between business partners. By moving from a paper-based exchange of business document to one that is electronic, businesses enjoy major benefits, such as decreased costs, increased processing speed, reduced errors and improved relationships with business partners.

Fast setup and easy to use

Organizations can get connected in less than an hour and have the OpenText migration team perform setup, testing and training within a week, depending on complexity. Even non-technical staff will be using Freeway in no time, thanks to a simple Microsoft® Windows®-based interface. The solution requires no advanced knowledge or previous experience in EDI to operate, swiftly moving organizations to B2B connectivity without dramatically shifting IT resources or hiring new personnel.

Visibility, validation and error reporting

Businesses can elevate their transaction visibility with an intuitive web interface and traffic light system that quickly identifies the status of each document. Users can set the system to validate documents and reduce the likelihood of sending faulty transactions. The smart alert functionality further improves status management and allows users to get ahead of any issues that may impact their business.

"The team at OpenText is very knowledgeable, approachable and was very helpful during the setup and since in providing support. We also feel assured that due to its global reach and scale, OpenText will be there today, tomorrow and well into the future to support us."—Richard Nuttall, senior plant manager, Nichirin U.K. Limited

[Read the success story](#)

[Join the conversation](#)

[Customer stories](#)

[Learn more](#)

Flexibility for growth

Organizations can easily and quickly connect to new business partners using one of OpenText's 1,500 global trading partner kits, with customizable add-ons available to help them take full advantage of their growing digital supply chain. And with OpenText's continuous investments in the Freeway platform, organizations can get the latest features and capabilities with cloud updates.

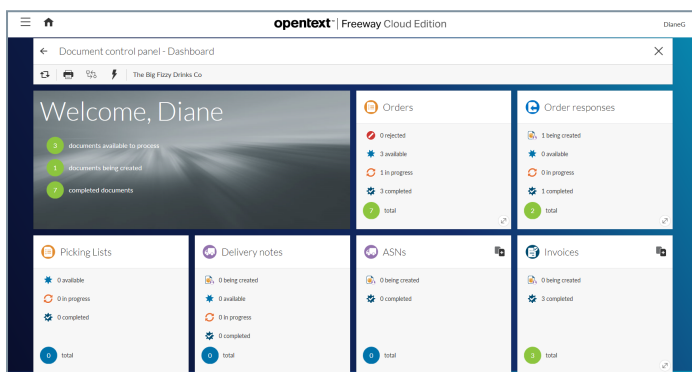
Integration with back-office, ERP systems

Freeway can help reduce manual processes and gain visibility into transactions by integrating to more than 200 back-office systems, like Microsoft Dynamics® Nav, NetSuite, SAP® and Sage. Users can enter orders, allocate SKUs and automatically raise or dispatch ASNs, avoiding time-consuming, error-prone manual intervention. Optional automation allows users to further streamline business processes for faster turnaround.

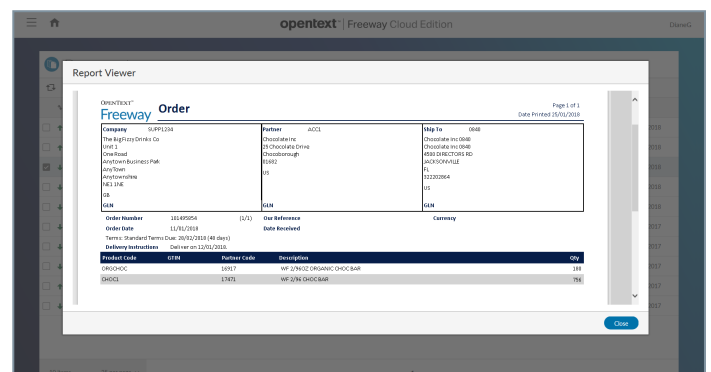
Consistent and reliable support

OpenText technical support staff is available and can usually solve issues without any impact on system performance. With a remote management functionality, support staff can access the system without a site visit or lengthy support calls.

Freeway Cloud is an easy-to-use and cost-effective EDI solution that removes the barriers to electronic trading for small to medium-sized businesses. It enables organizations to onboard trading partners and new mandates quickly with customizable add-ons for business optimization and OpenText's ongoing investments in the Freeway platform.



Document Control Panel



Print/Preview view